

TRAILER FUEL STATION

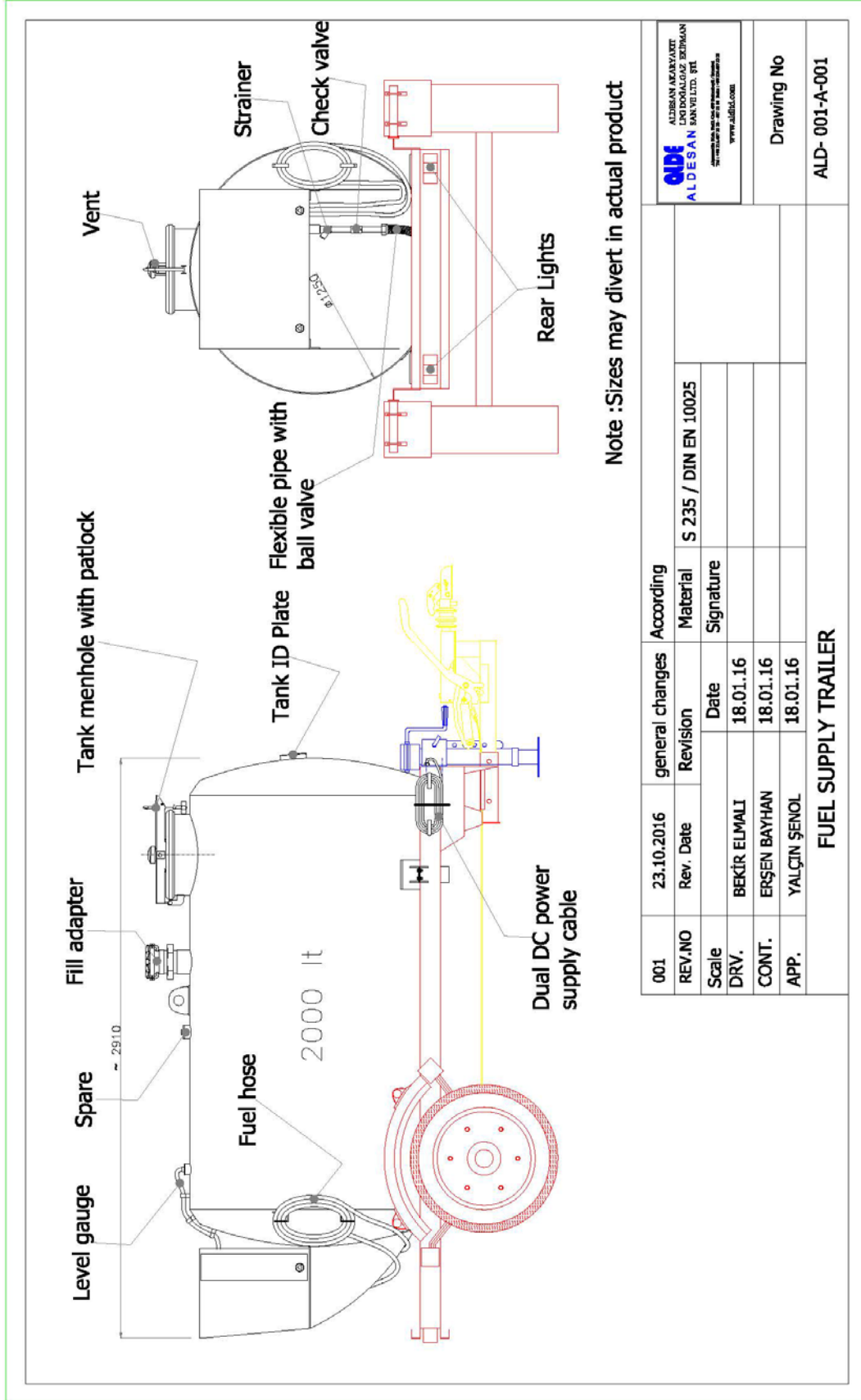


Specs

- Tank with 2 m3 - 71 ft3 capacity.
- Tank Manhole
- Filling Adapter with patlock
- Air Vent
- Single or Double axle trailer with height control
- Rear lights instalation
- Filled with fuel the total weight is less than 3,500 kg – 7,700 lbs, meaning larger 4WD vehicles can easily tow the unit.
- The tank is delivered with baffle plates for safe towing.
- The unit includes a 12V pump giving 50 l/m – 13 gpm, powered by towing vehicle's battery. Meaning the unit can be operated anywhere.
- 3/4" Atex solenoid valve
- 3/4" Strainer
- 3/4" Checkvalve
- 3/4" Hose 4 meters
- 3/4" Automatic Nozzle

Dimensions

Weight (empty)	:	1720 kg – 3784 lbs
Full weight with 2000 liter diesel - 526 gal.	:	3450 kg – 7590 lbs
Dimensions	:	L x W x H(excl tow bar): 2900x2000x2000 mm – 9.5x6.5x6.5 ft.
Different configurations and capacities on request		



001	23.10.2016	general changes	According	Material	S 235 / DIN EN 10025
REV.NO	Rev. Date	Revision	Date	Signature	
Scale					
DRV.	BEKİR ELMALI	18.01.16			
CONT.	ERŞEN BAYHAN	18.01.16			
APP.	YALÇIN ŞENOL	18.01.16			
FUEL SUPPLY TRAILER					
Drawing No					
ALD- 001-A-001					

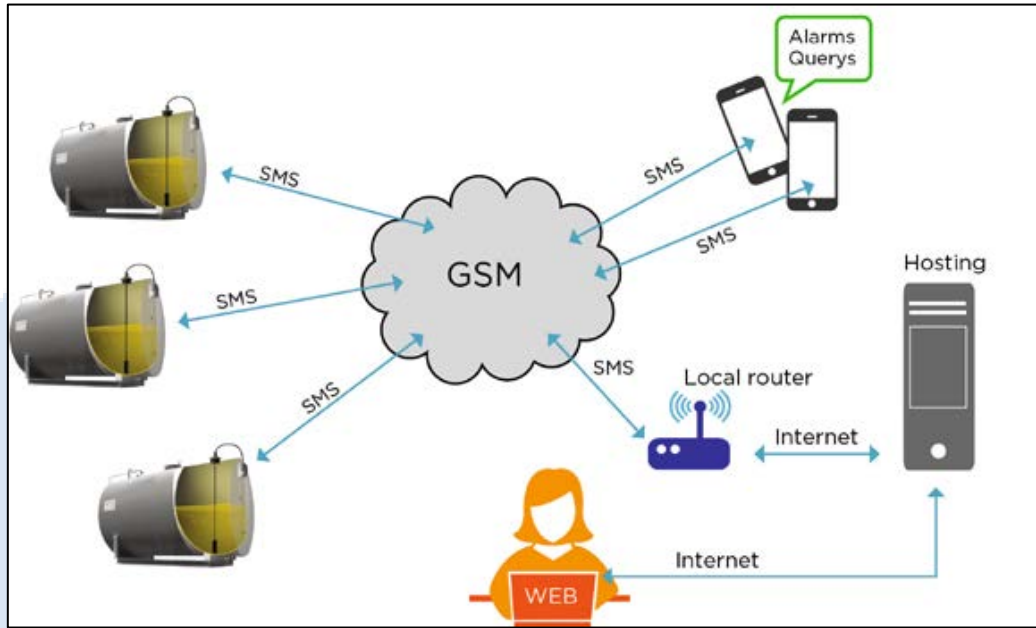
Trailer Remote Control System (Optional Feature)

Trailer Remote Control System uses GSM signal.

Wherever GSM signals are available, it is possible to install remote reading of the fuel level of the tank. Meaning the tank level can be monitored from a central computer.

Enabling controlled filling of the tank and detects unauthorized deliveries of the fuel.

Real time position control of the trailer can be followed remotely.



Remote reading of tank s using GSM signal



The card reader is placed in the middle of the control panel. When a chip card is placed close to the card reader and the system will be authorized to deliver fuel.

System Details

